



Café Scientifique

Cosmic Road Trip:

From Chicago to South Pole to the Edge of the Universe

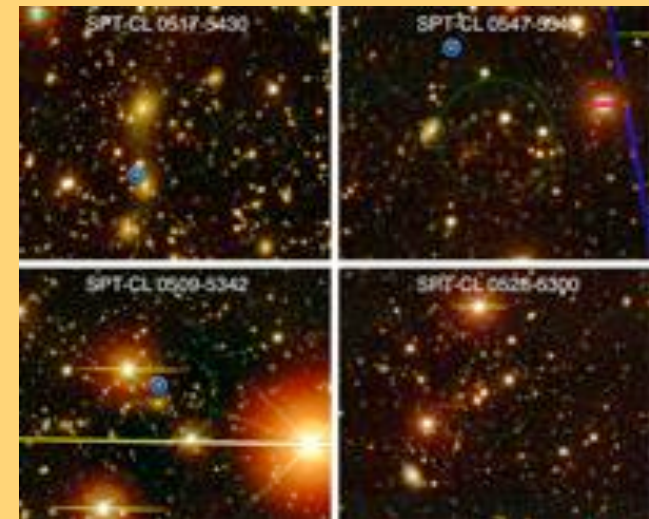


**Presenter:
Tom Crawford**

**Time & Date:
7-9 PM
MONDAY**

January 25, 2010
(Limited to first 50 Attendees)

Location: The Map Room
(www.maproom.com) 1949 N. Hoyne



Café Email list <https://cfcwork.uchicago.edu/mailman/listinfo/cafe>



Café Scientifique



Cosmic Road Trip

From Chicago to the South Pole to Edge of the Universe



Presenter: Tom Crawford

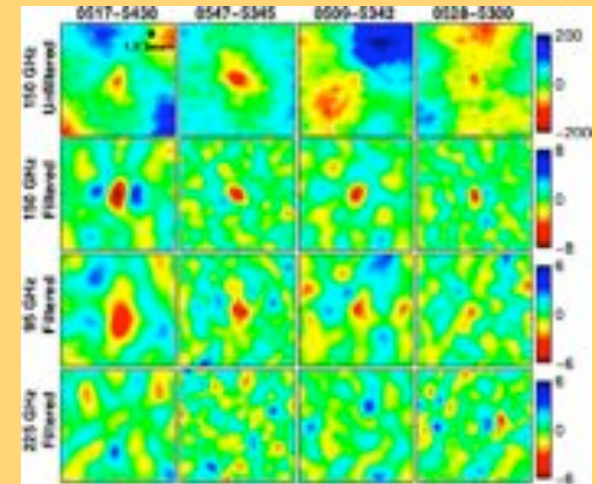
Time & Date: 7-9 PM

Monday January 25, 2010

Location: The Map Room

1949 N. Hoyne

(Limited to first 50 Attendees)



By making maps of (quite literally) the farthest edge of the visible Universe, the 10-meter South Pole Telescope (SPT) is unlocking some of the deepest mysteries in science, including the nature of the strange form of mass-energy that seems to dominate the Universe and be responsible for its accelerated expansion. Join a conversation about the telescope and the science it is delivering, intertwined with a personal perspective on what it's like to travel to the most remote location on Earth to build a 269 ton telescope on top of Antarctic ice.

More info on SPT at

<http://pole.uchicago.edu/>



Café Email list <https://cfcwork.uchicago.edu/mailman/listinfo/cafe>